



FutureFlow Rx[®]

The Power of Predictive Analytics



Reliable, Data – Driven Predictions For Operational Excellence

FutureFlow Rx[®] is a patient flow analytics platform that continuously updates from the electronic health records (EHR) and predicts patient census and bed availability for the optimal level of care.

Solution Brief

Our Success

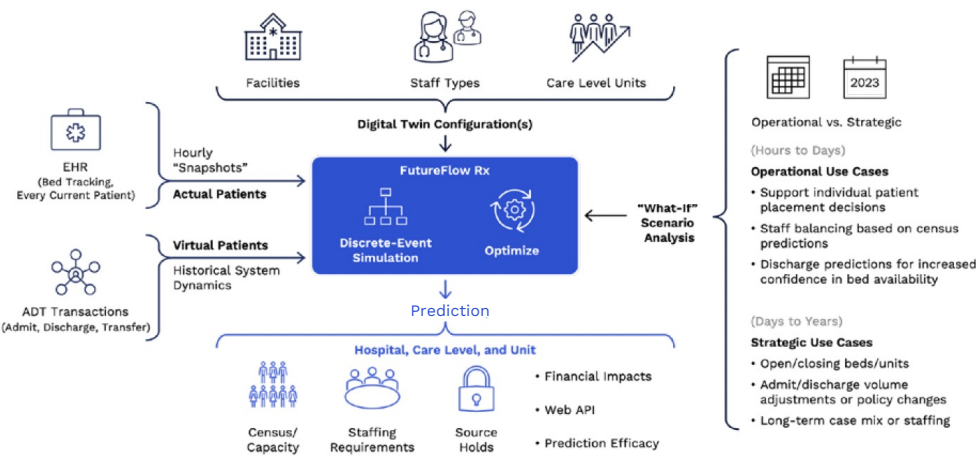
“BigBear.ai’s FutureFlow Rx® software is a groundbreaking innovation in the healthcare industry, offering unprecedented capabilities in predicting hospital census. One of the most powerful features of FutureFlow Rx® is its ability to run various scenarios before decisions are made. This predictive capability allows administrators to explore how different constraints and variables will impact emergency department (ED) holding times and overall unit census.”

- Ashley Benedict
Chief IT Project Management Officer, UF Health

“FutureFlow Rx® has proven to be an invaluable tool, allowing us to simulate operational scenarios, optimize throughput, and assess the broader impact of boarding in critical areas such as the ED and PACU. By leveraging these insights, we can implement simultaneous changes, make data-driven decisions, and streamline processes to enhance efficiency—all without disrupting daily workflows.”

- Candice M Faulks MSN, RN
Director of Patient Flow, Thomas Jefferson University Hospital

FutureFlow Rx® System Overview and Features



Save Time, Save Money, & Improve Patient Care

Help create you Patient Command Center for the Hospital with FutureFlow Rx®.

- Reduce Length of Stay
- Streamline Resources
- Avoid Unnecessary Diversions
- Deliver Optimal Care
- Avoid Extra Costs with Optimal Facility Planning

FutureFlow Rx® Modules

The continuously-updating modules can predict census, capacity, and staffing needs. With a digital twin of your hospital, identify ways to improve efficiencies, and reduce patient flow operational risk.



Numbers above are fictional & for illustrative purposes only

Patient Flow Digital Twin Use Cases

- Determine future staffing needs
- Capture and predict accurate bed count
- Predict patient census by unit, hospital, or hospital system in hours, days, weeks, and months ahead
- Test “what-if” scenarios and contingency plans
- Master planning for future facility expansion and service lines

STAY CONNECTED



BigBear.ai
info@bigbear.ai

CONTACT US HERE →

